

DOORS & WINDOW SCHEDULE		WINDOW SCHEDULE	
NO.	DESCRIPTION	NO.	DESCRIPTION
D10	600 X 2000	W1	1500 X 1500
D11	600 X 2000	W2	1500 X 1500
D12	600 X 2000	W3	1500 X 1500
D13	600 X 2000	W4	1500 X 1500
D14	600 X 2000	W5	1500 X 1500
D15	600 X 2000	W6	1500 X 1500
D16	600 X 2000	W7	1500 X 1500
D17	600 X 2000	W8	1500 X 1500
D18	600 X 2000	W9	1500 X 1500
D19	600 X 2000	W10	1500 X 1500
D20	600 X 2000	W11	1500 X 1500
D21	600 X 2000	W12	1500 X 1500
D22	600 X 2000	W13	1500 X 1500
D23	600 X 2000	W14	1500 X 1500
D24	600 X 2000	W15	1500 X 1500
D25	600 X 2000	W16	1500 X 1500
D26	600 X 2000	W17	1500 X 1500
D27	600 X 2000	W18	1500 X 1500
D28	600 X 2000	W19	1500 X 1500
D29	600 X 2000	W20	1500 X 1500
D30	600 X 2000	W21	1500 X 1500
D31	600 X 2000	W22	1500 X 1500
D32	600 X 2000	W23	1500 X 1500
D33	600 X 2000	W24	1500 X 1500
D34	600 X 2000	W25	1500 X 1500
D35	600 X 2000	W26	1500 X 1500
D36	600 X 2000	W27	1500 X 1500
D37	600 X 2000	W28	1500 X 1500
D38	600 X 2000	W29	1500 X 1500
D39	600 X 2000	W30	1500 X 1500
D40	600 X 2000	W31	1500 X 1500
D41	600 X 2000	W32	1500 X 1500
D42	600 X 2000	W33	1500 X 1500
D43	600 X 2000	W34	1500 X 1500
D44	600 X 2000	W35	1500 X 1500
D45	600 X 2000	W36	1500 X 1500
D46	600 X 2000	W37	1500 X 1500
D47	600 X 2000	W38	1500 X 1500
D48	600 X 2000	W39	1500 X 1500
D49	600 X 2000	W40	1500 X 1500
D50	600 X 2000	W41	1500 X 1500
D51	600 X 2000	W42	1500 X 1500
D52	600 X 2000	W43	1500 X 1500
D53	600 X 2000	W44	1500 X 1500
D54	600 X 2000	W45	1500 X 1500
D55	600 X 2000	W46	1500 X 1500
D56	600 X 2000	W47	1500 X 1500
D57	600 X 2000	W48	1500 X 1500
D58	600 X 2000	W49	1500 X 1500
D59	600 X 2000	W50	1500 X 1500
D60	600 X 2000	W51	1500 X 1500
D61	600 X 2000	W52	1500 X 1500
D62	600 X 2000	W53	1500 X 1500
D63	600 X 2000	W54	1500 X 1500
D64	600 X 2000	W55	1500 X 1500
D65	600 X 2000	W56	1500 X 1500
D66	600 X 2000	W57	1500 X 1500
D67	600 X 2000	W58	1500 X 1500
D68	600 X 2000	W59	1500 X 1500
D69	600 X 2000	W60	1500 X 1500
D70	600 X 2000	W61	1500 X 1500
D71	600 X 2000	W62	1500 X 1500
D72	600 X 2000	W63	1500 X 1500
D73	600 X 2000	W64	1500 X 1500
D74	600 X 2000	W65	1500 X 1500
D75	600 X 2000	W66	1500 X 1500
D76	600 X 2000	W67	1500 X 1500
D77	600 X 2000	W68	1500 X 1500
D78	600 X 2000	W69	1500 X 1500
D79	600 X 2000	W70	1500 X 1500
D80	600 X 2000	W71	1500 X 1500
D81	600 X 2000	W72	1500 X 1500
D82	600 X 2000	W73	1500 X 1500
D83	600 X 2000	W74	1500 X 1500
D84	600 X 2000	W75	1500 X 1500
D85	600 X 2000	W76	1500 X 1500
D86	600 X 2000	W77	1500 X 1500
D87	600 X 2000	W78	1500 X 1500
D88	600 X 2000	W79	1500 X 1500
D89	600 X 2000	W80	1500 X 1500
D90	600 X 2000	W81	1500 X 1500
D91	600 X 2000	W82	1500 X 1500
D92	600 X 2000	W83	1500 X 1500
D93	600 X 2000	W84	1500 X 1500
D94	600 X 2000	W85	1500 X 1500
D95	600 X 2000	W86	1500 X 1500
D96	600 X 2000	W87	1500 X 1500
D97	600 X 2000	W88	1500 X 1500
D98	600 X 2000	W89	1500 X 1500
D99	600 X 2000	W90	1500 X 1500
D100	600 X 2000	W91	1500 X 1500
D101	600 X 2000	W92	1500 X 1500
D102	600 X 2000	W93	1500 X 1500
D103	600 X 2000	W94	1500 X 1500
D104	600 X 2000	W95	1500 X 1500
D105	600 X 2000	W96	1500 X 1500
D106	600 X 2000	W97	1500 X 1500
D107	600 X 2000	W98	1500 X 1500
D108	600 X 2000	W99	1500 X 1500
D109	600 X 2000	W100	1500 X 1500

NOTES:
 ALL DIMENSIONS ARE IN METRES UNLESS OTHERWISE STATED.
 ALL EXTERNAL WALLS ARE 200 THICK AND ALL INTERNAL WALLS ARE 100 THICK.
 BRICKWORK IS TO BE 1:4:8 MIXED WITH 10% WATERPROOFING.
 GRADE OF CONCRETE SHALL BE AS PER STRUCTURAL DESIGN.
 GRADE OF STEEL IS 600 IS CODE ISR 1786:1993.

THIS IS TO CERTIFY THAT THE BUILDING PLAN HAS BEEN DRAWN AS PER THE PROVISIONS OF K.A.C. BUILDING RULE 2006 AS AMENDED FROM TIME TO TIME, IN THE CABLE SITE, NOT A TANK OR FILLED UP TANK, HAS TWO WATERLOOES.

SUKANYA DASGUPTA
 Registered Architect
 No. 1234, Park Street, Kolkata - 700 009

SIGNATURE OF ARCHITECT

DECLARATION OF E.S.E.
 THE STRUCTURAL DESIGN AND DRAWING OF BOTH FOUNDATION & SUPERSTRUCTURE HAS BEEN PREPARED BY ME OR UNDER MY SUPERVISION AND I AM A REGISTERED ARCHITECT AS PER THE NATIONAL ARCHITECTURAL ACT, 1957 AND I AM NOT A MEMBER OF ANY OTHER PROFESSION.
 I HAVE REVIEWED THE STRUCTURAL DESIGN AND DRAWING AND I AM SURE THAT THE STRUCTURE WILL BE SAFE AND STABLE AGAINST ALL VERTICAL, LATERAL, AND SEISMIC LOADS AND I AM NOT A MEMBER OF ANY OTHER PROFESSION.

DR. VINOD K. JAIN
 Registered Structural Engineer
 No. 1234, Park Street, Kolkata - 700 009

SIGNATURE OF STRUCTURAL ENGINEER

I HAVE REVIEWED THE STRUCTURAL DESIGN AND DRAWING AND I AM SURE THAT THE STRUCTURE WILL BE SAFE AND STABLE AGAINST ALL VERTICAL, LATERAL, AND SEISMIC LOADS AND I AM NOT A MEMBER OF ANY OTHER PROFESSION.

DR. VINOD K. JAIN
 Registered Structural Engineer
 No. 1234, Park Street, Kolkata - 700 009

SIGNATURE OF STRUCTURAL REVIEWER

DECLARATION OF OWNER
 I DO HEREBY DECLARE WITH FULL RESPONSIBILITY THAT I SHALL BE RESPONSIBLE FOR THE CONSTRUCTION OF THE BUILDING AND I SHALL BE RESPONSIBLE FOR THE STRUCTURAL STABILITY OF THE BUILDING AND I SHALL BE RESPONSIBLE FOR THE SAFETY OF THE BUILDING AND I SHALL BE RESPONSIBLE FOR THE SAFETY OF THE BUILDING.

SIGNATURE OF OWNER

SIGNATURE OF OWNER
 (WEST BENGAL HOUSING BOARD)

PROJECT
 PROPOSED RESIDENTIAL COMPLEX AT 405, BARAKHOLA, DAG NO-136(P), 136(F), 137(F), 126/165(P), 127/168(P), 128/170(P), 129/171(P) & 124/167(P) IN MUJZA-BARAKHOLA, J.L. NO-21 P.S. - PURBA JADAVPUR, DIST - 24 PGS (SOUTH), MUKUNDAPUR KMC WARD NO-108, BOROUGH NO - XII, KOL - 700099.

OWNER
 WEST BENGAL HOUSING BOARD

TITLE
 TOWER B & TOWER E - FLOOR PLANS

ARCHITECT
 SUKANYA & ASSOCIATES
 1234, Park Street, Kolkata - 700 009

SCALE: 1:500

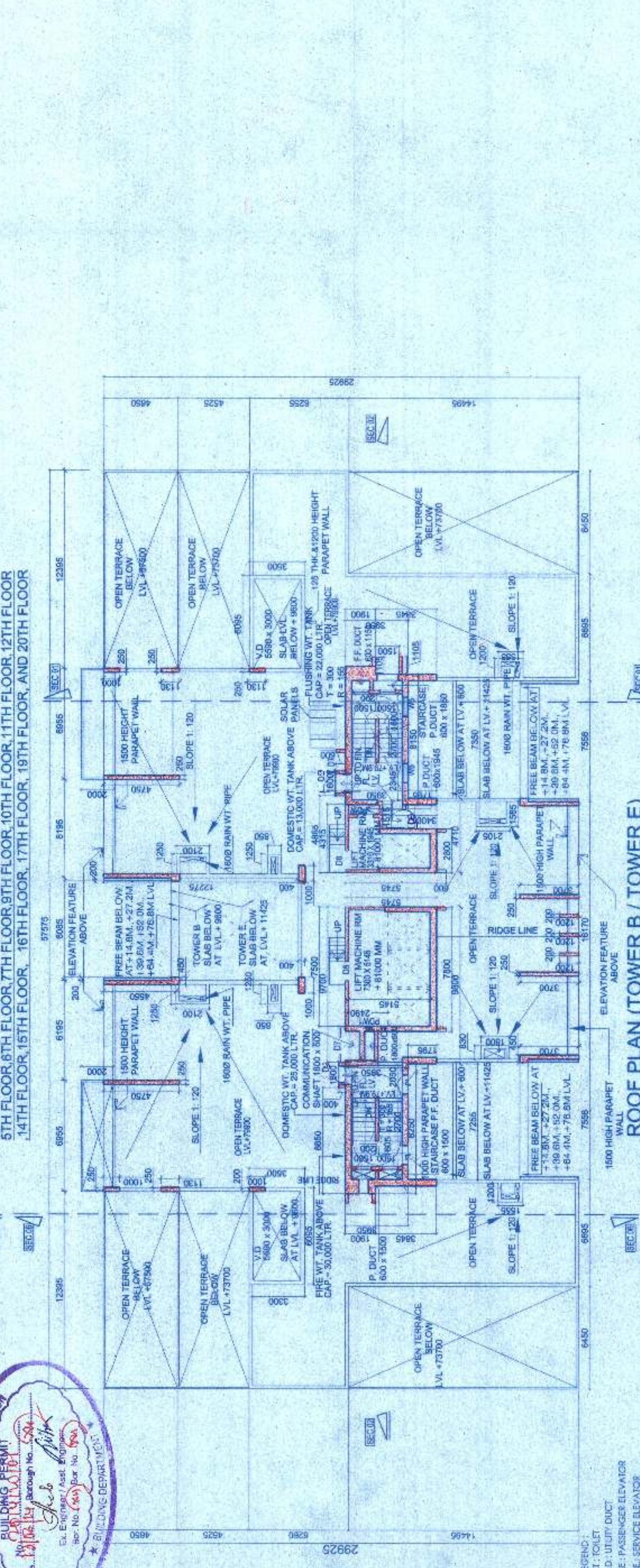
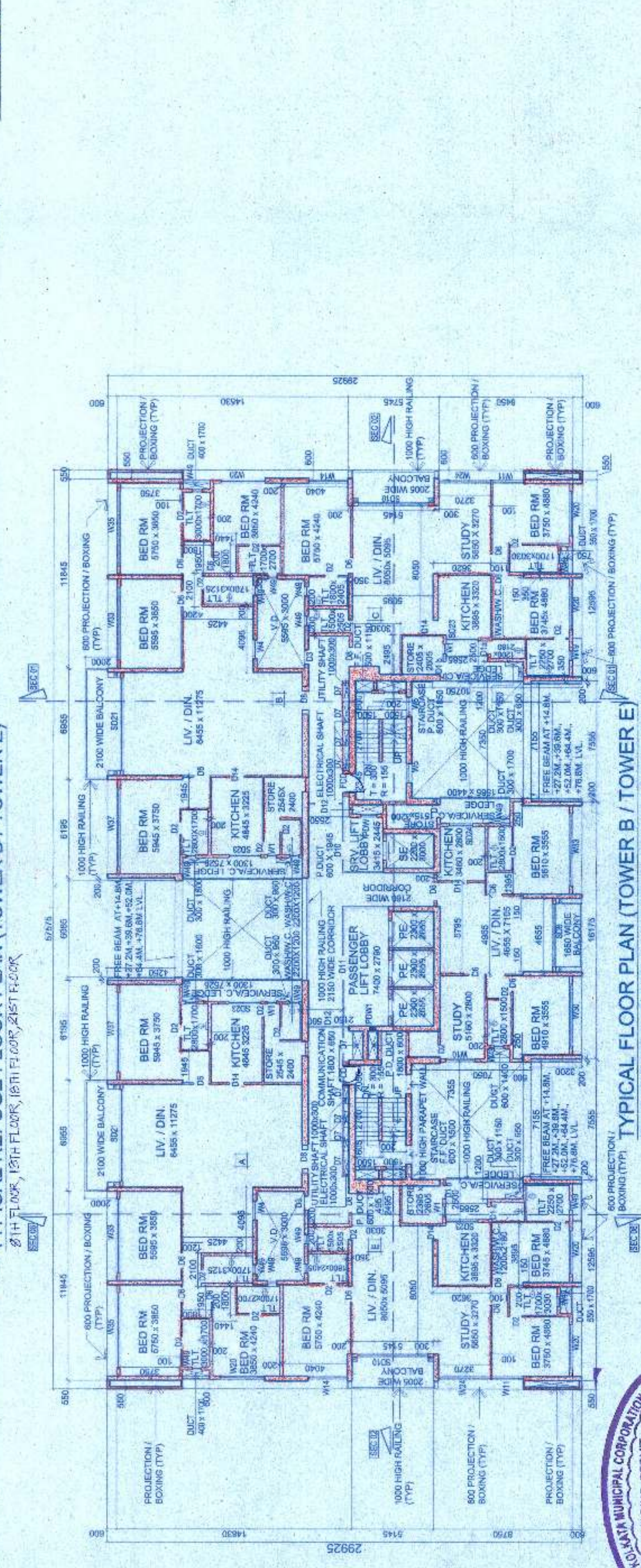
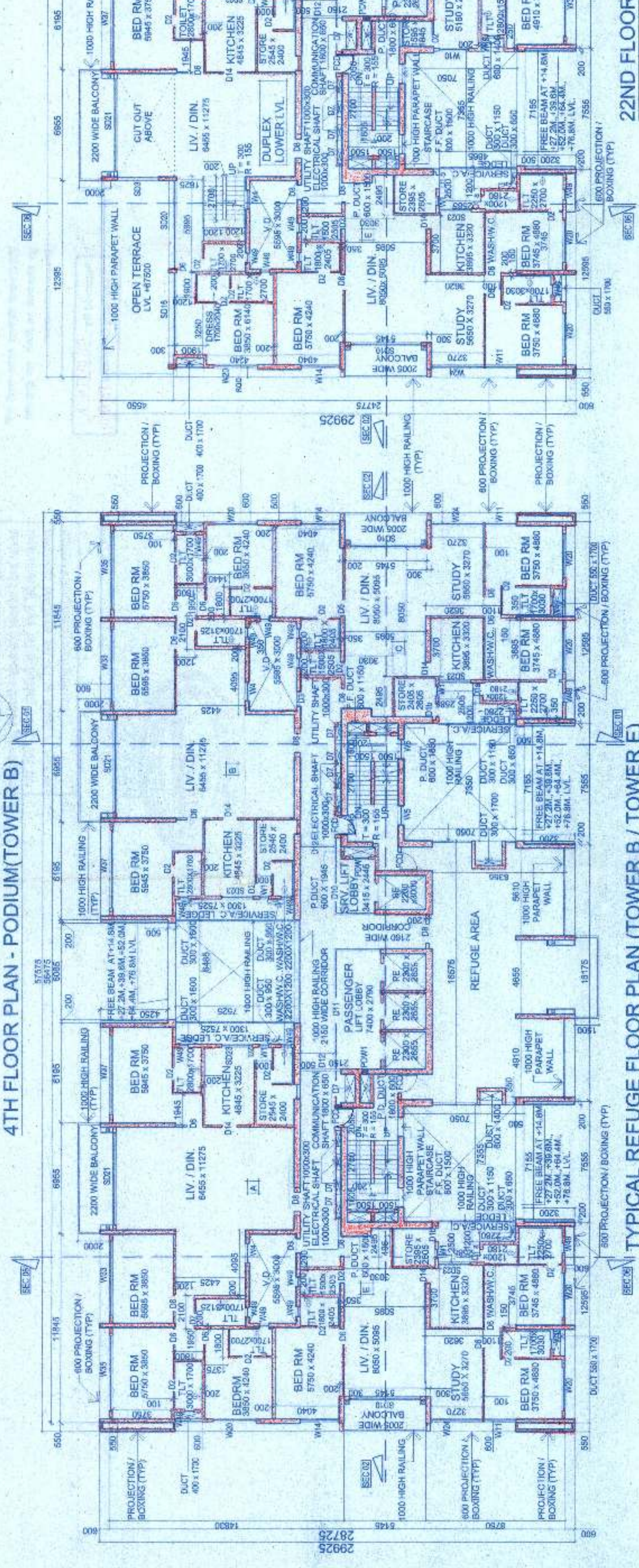
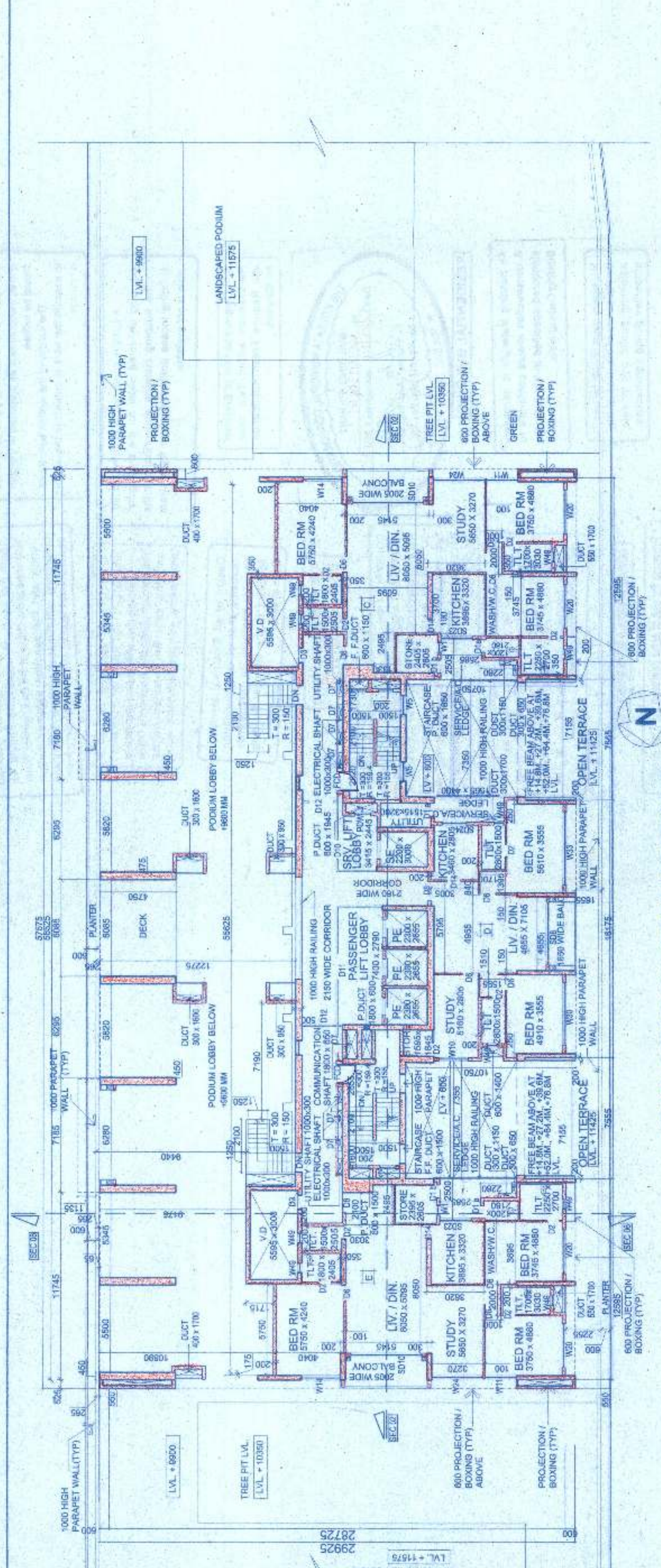
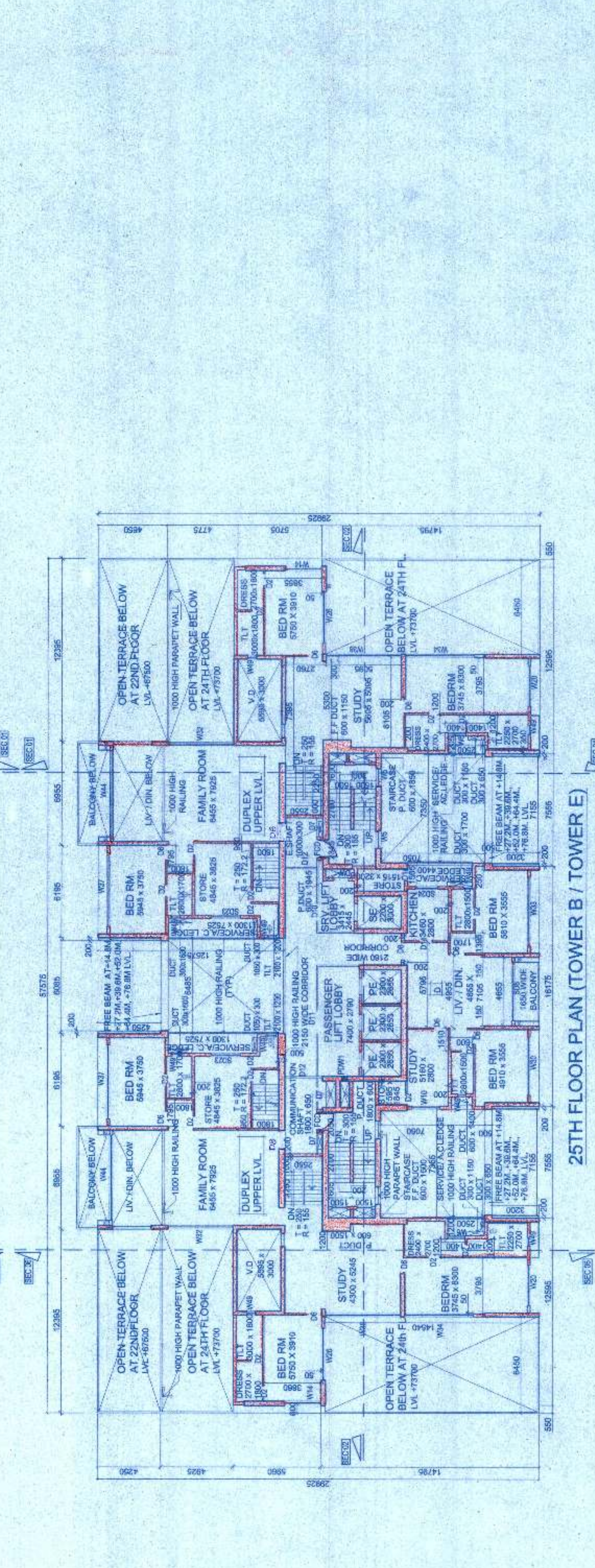
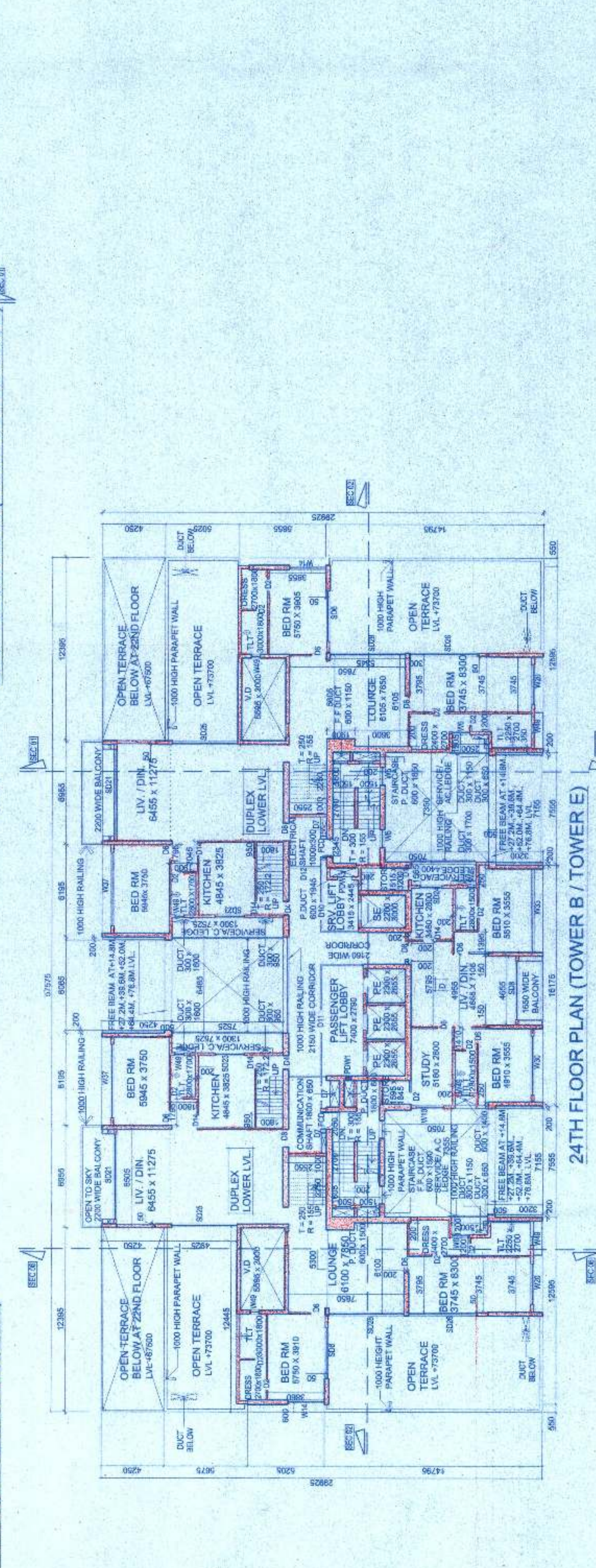
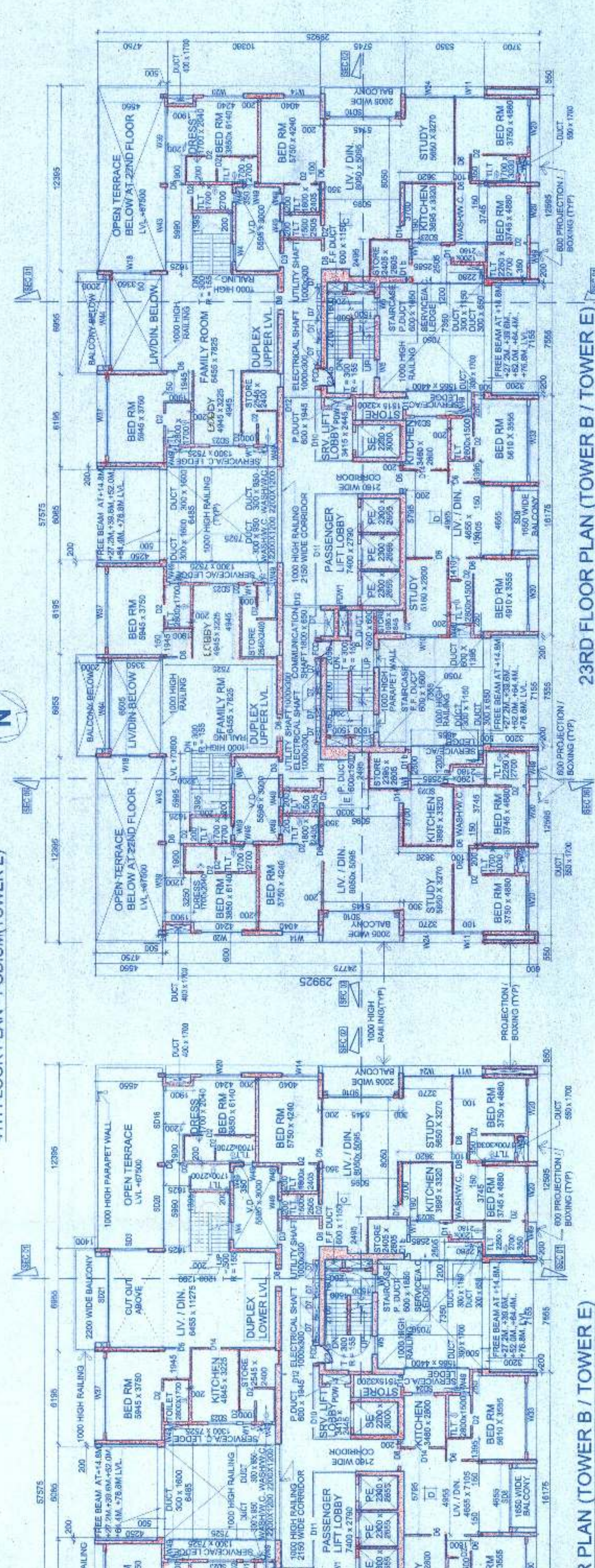
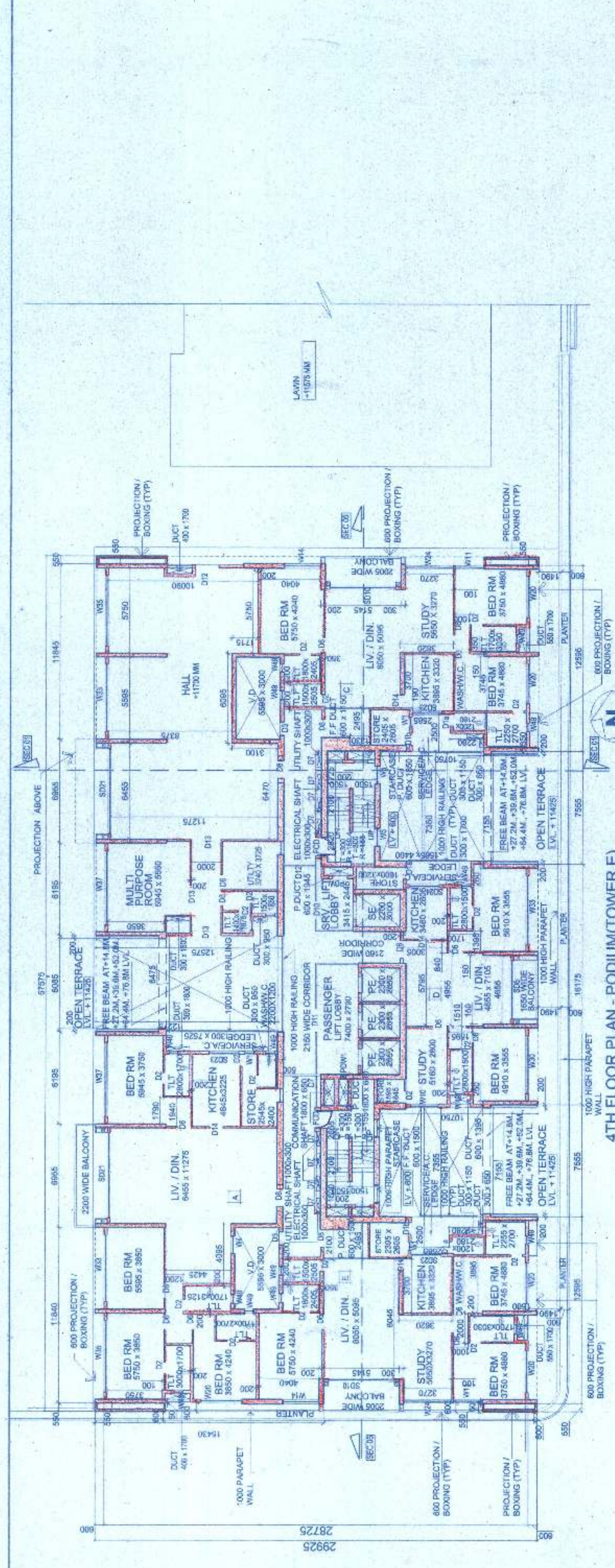
DATE: 18.03.2014

DRAWN BY: G.B.

APPROVED BY: S.D.

DRAWING NO. SA/ARCH/12/AM/TA/14/18/08

REVISION



APPROVED BY: S.D.

DATE: 18.03.2014

SCALE: 1:500